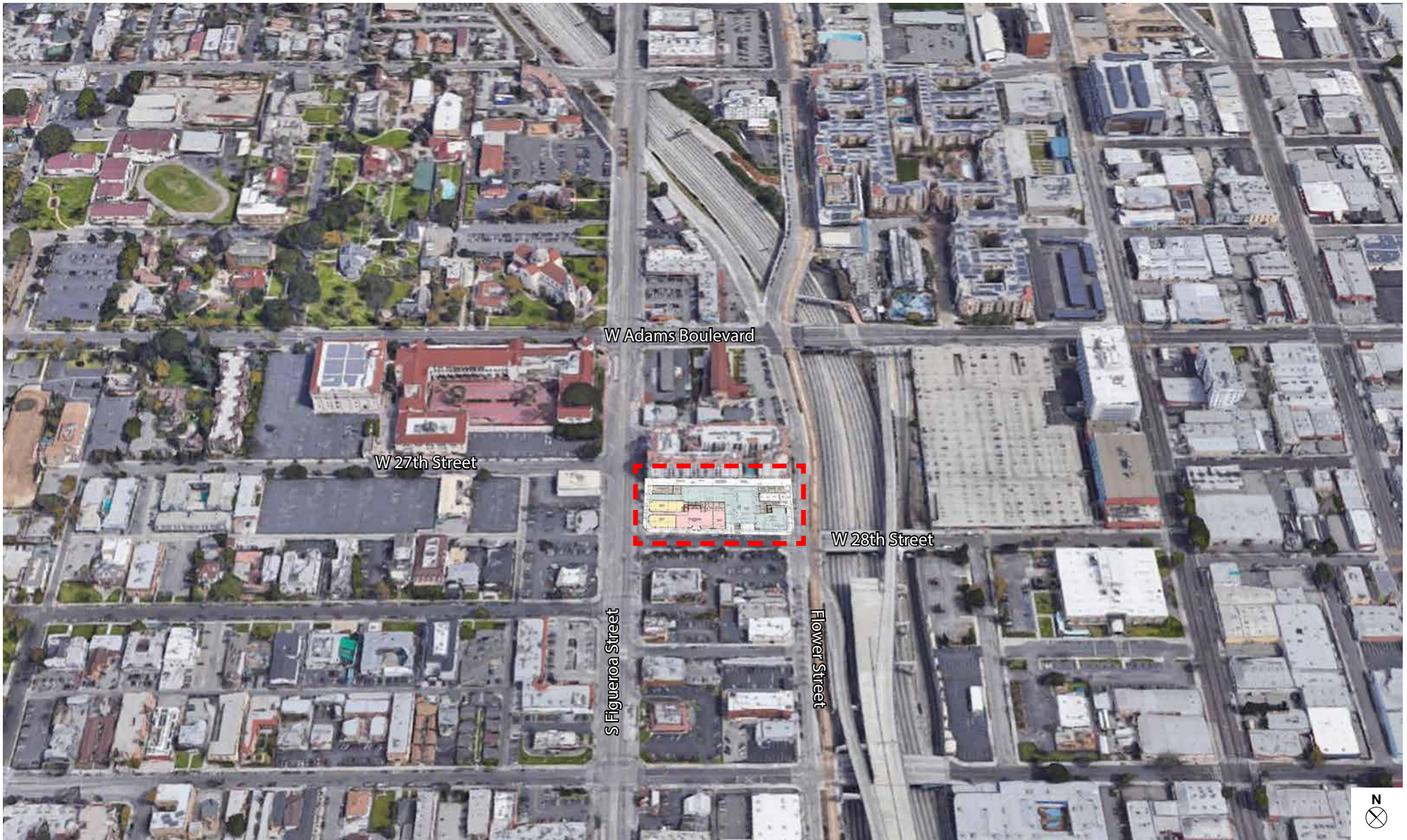




2718 S. FIGUEROA STREET





W 28TH STREET, LOOKING AT SITE



S FIGUEROA STREET, LOOKING AT SITE



S FIGUEROA STREET, LOOKING SOUTH



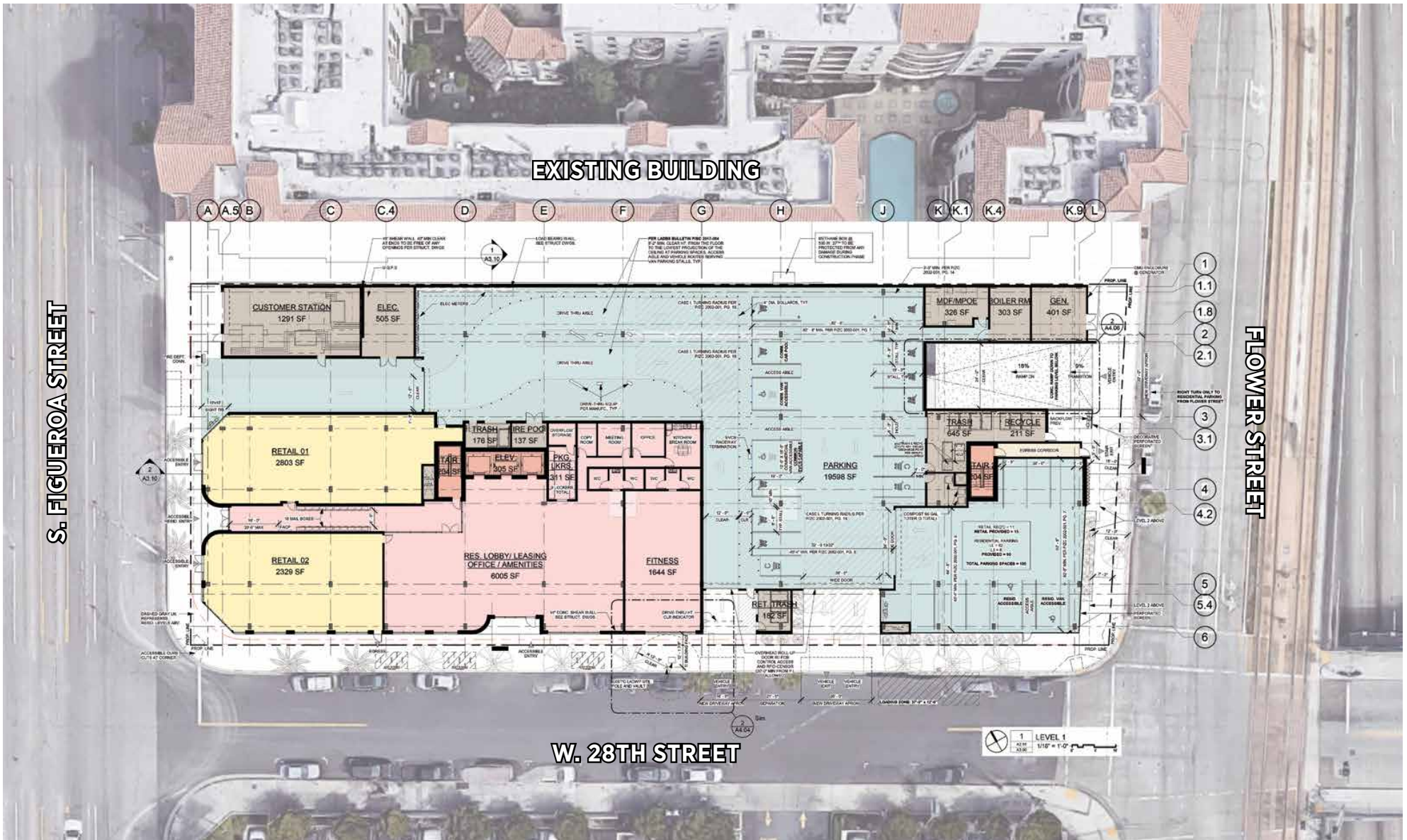
W 28TH STREET AND FLOWER STREET, LOOKING NORTH

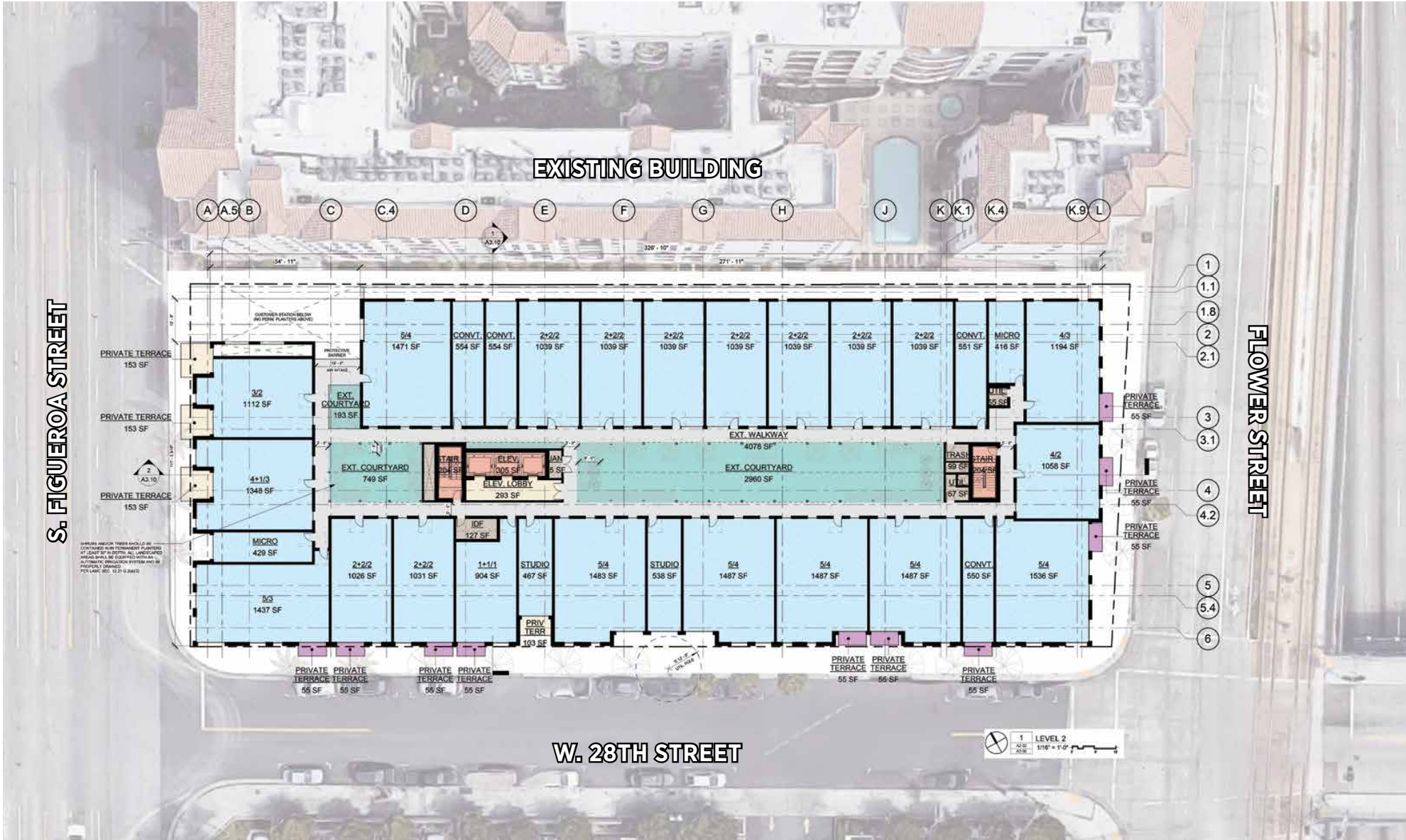


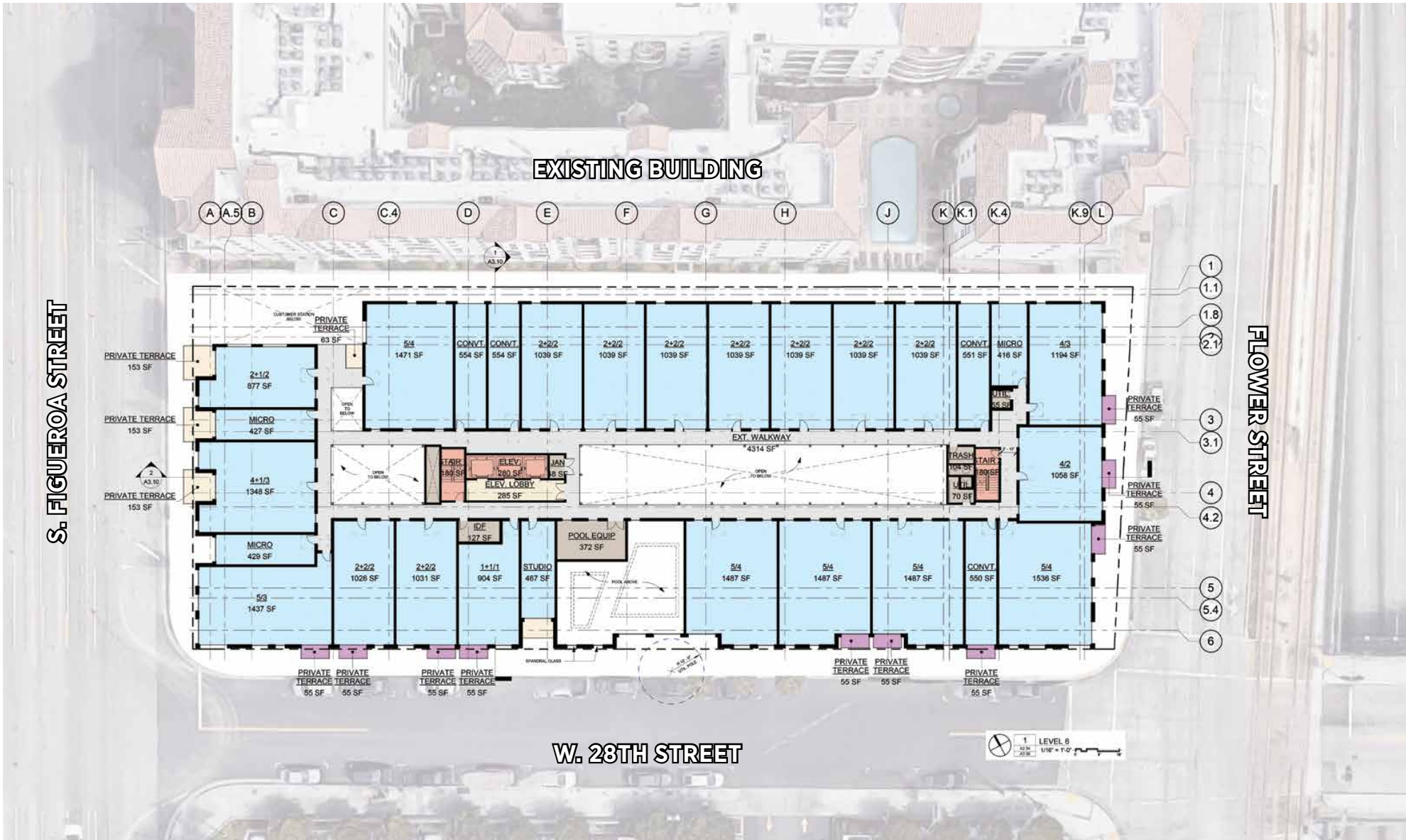
S FIGUEROA STREET AND W ADAMS BLVD, LOOKING AT AAA BUILDING

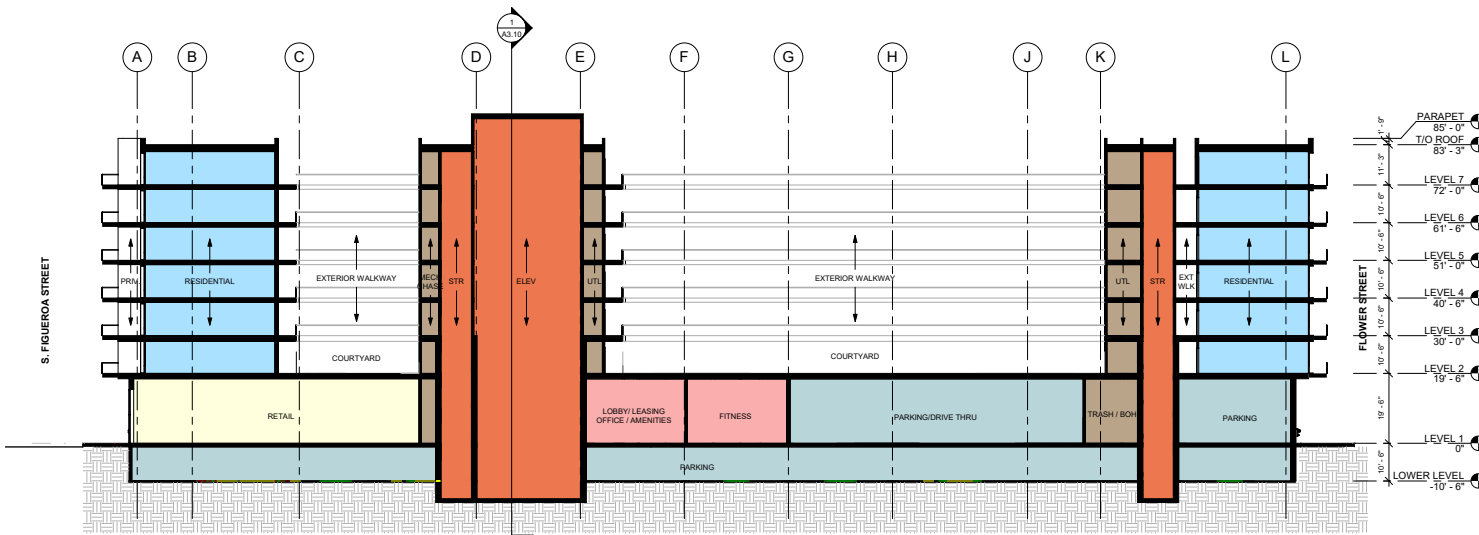


W ADAMS BLVD, LOOKING AT AAA BUILDING

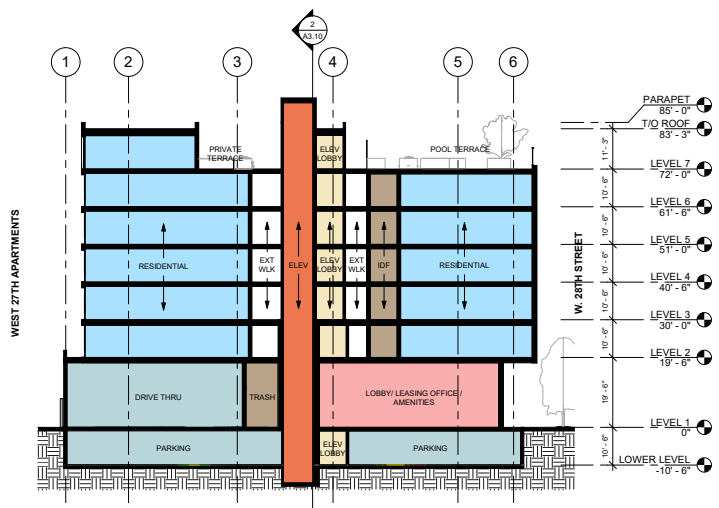








2 LONGITUDINAL SECTION
1/8" = 1'-0"



1 CROSS SECTION
1/8" = 1'-0"









A **2718 S. FIGUEROA STREET**

ANTUNOVICH ASSOCIATES • ARCHITECTURE, PLANNING, INTERIOR DESIGN • CORE SPACES AND AMPLIFY • DEVELOPERS

CONCEPT RENDERING
LOS ANGELES, CALIFORNIA • APRIL 29, 2020







Old Design



Old Design





Old Design